

IPVI INSIGHTS

Connecting & Supporting Families Whose Children are Visually Impaired, Including Those with Additional Disabilities

July
2013



2013 12TH ANNUAL MEMBERS ONLY OUTING

“Literacy through Experience at Brookfield Zoo”

Imagine (in the mind’s eye) a sensory Zoo experience —listening to the animals, smelling the environment, touching real and simulated animals in their habitat....well

Saturday, July 20, 2013 at Brookfield Zoo

is the chance of a lifetime....the only problem? Are you going to be there?

ATTENTION! ATTENTION! Brookfield Zoo is BIG and the choices are many—arrive early and plan on spending the entire day. **Plan to arrive at 9:30 a.m.; the Zoo opens at 10 a.m.** Tons of activities are available throughout your day! Your IPVI T-Shirt will be your exclusive passport into all the action....parking (south lot), admission to Zoo, pizza lunch, the Great Bears’ Wilderness, the Seven Seas Dolphin Show (with exclusive after show event), Hamill Family Play Zoo, Children’s Petting Zoo, etc.



SPEAKER INFO

Our keynote speaker will be Matthew Juskie. Matt is a 17-year old senior at Lincolnway North High School and writes the Ask M@ column in our IPVI’s monthly Insights. He is an honor student, an avid golfer who utilizes a spotter as he is legally blind, has aniridia and nystagmus. He will speak about the importance of parental influence on the success of children with vision impairments or other disabilities.

Become an IPVI member! Dues paying members receive free admission and parking at our Members Only Events — Zoo Outing, Holiday Parties, Picnic, etc. — activities intended to provide social and literacy opportunities for children, parents, teachers, professionals and friends.

If you’d like more information on how to attend the 2013 IPVI Zoo Outing, or how to become a member of the “IPVI Family Network”, call **Mary Zabelski at the Chicago Lighthouse for the Blind, 312-666-1331 x3675.**

Inside This Issue:

IPVI Zoo Outing	1
Last Chance for Brookfield Zoo 2013	2
Change/IPVI's Phone Number	3
Ms. Vic's Volleys	3
2013 Zoo Registration Form	4
Zoo Directions	5
Free National Park Passes for Disabilities	6
Outdoor Play Tips for Toddlers (Blind or VI)	6
Ask M@	7
To Include or Not to Include	8
Helping Traumatized Children Learn	9
ADA Breaking Down the Barriers Sessions	10
Free Braille Book Bags from National Braille Press	11
ADA Celebration Registration Form	12
Jewish Guild Healthcare Tele-Support Network	13
IPVI's MBJ Scholarship Fund	14
Lighthouse North Summer Camp	15
Summer Camp Registration Form	16
Summer Audio-Description Movies	17
Summer Plays with Audio Description	18
Lighthouse Young Professionals Social Club	19
Lighthouse Away Southwestern Expedition	20
FRCD Free Parent Workshops	22
Making Sense	22
Lighthouse North's Adult Enrichment Programs	23
The GuildScholar Program	24
APH News	25
Telesensory PICO	27
Brookfield Zoo New Borns	27
The Eye Specialists Center	28
IPVI Board of Directors	28
IPVI Membership Dues	29
IPVI Calendar of Events	30

Last Chance for Brookfield Zoo 2013

Bill Bielawski, IPVI President

You have all received a mailing to renew your membership with IPVI, or join "NAPVI and IPVI". It also let you **sign up for our annual outing at Brookfield Zoo**. There were three pieces of paper in the envelop.

Recall, the first page was printed on our IPVI letter-head. It gave an explanation of the mailing. At the bottom of the front side, **it gave the date of the Zoo Outing. On the back, it has instructions and a map for the Zoo.** This page is for you to keep.

The second page was your membership form pre-printed with the information we currently have in IPVI's membership database. We asked that you update any information that has changed or is missing. You had the option to join only IPVI by sending a \$15 check payable to IPVI to our Naperville address. Or you can join both "NAPVI and IPVI" by sending a \$40 check payable to NAPVI to NAPVI's address.

If you already are a member of NAPVI+IPVI, we still sent you a membership form to update your information. Mail this form, but no money to our IPVI address. NAPVI will send you a notice when you membership expires.

The third sheet of paper was the usual Zoo Outing registration form so you can order and pay for your T-shirts. This form and your T-shirt check payable to IPVI must be received by Mary Zabelski at the Chicago Lighthouse by Sunday, July 7th, so we can order your shirts in time.

The Zoo Outing is a members-only event so you must join IPVI or NAPVI+IPVI as described above too. I hope to see many of you at Brookfield Zoo on the 3rd Saturday in July.

Registration closes on July 7th, 2013.

PLEASE REGISTER BY JULY 7th, 2013

Mail Registration Form & your check payable to IPVI to:

Mary Zabelski
The Chicago Lighthouse
1850 W. Roosevelt Road
Chicago, IL 60608



Dear Families and Readers:

Due to costs and little use, IPVI will no longer have a toll free number. All calls will continue to be handled by Victoria Juskie.

IPVI's main contact number is being changed to 815-355-2098. This is Victoria's cell phone number, and she will be able to receive text messages as well. You may leave messages for any IPVI Board Member on any matter and they will be forwarded.

If you have any questions, please contact us at this number or via email at vajuskie@aol.com. Thanks for your understanding.

MS. VIC'S VOLLEYS

Victoria Juskie, IPVI Treasurer

VOLLEY I

Since our last publication, the following families, individuals, and/or organizations became members:

No new members have joined this period.

VOLLEY II

Helen Keller wrote:

"I long to accomplish a great and noble task but my chief duty is to accomplish small tasks as if they were great and noble."

How true these words are. I realize the im-

portance of this idea every day. Sometimes though we get so caught up in the minutiae, we forget to look at the full picture. Take for example the fact that we don't give ourselves enough credit for the things we do. I always worry about whether or not I'm a good enough mom. There's four of them and one of me. Special needs issues never end for families like ours. I know the kids are cared for well, but do I take enough time to play with them? That's important, too. It seems I'm always working, saying, "No, I can't play basketball right now, dinner's on the stove." Or, "No, I can't play a two hour game of monopoly, I've got wash/housework/errands etc., etc. to do." Will they remember that I always had their laundry, lunch, or supplies ready, even though doing these tasks left little time to play? Your guess is as good as mine, but

(Continued on page 6)

IPVI's 2013 BROOKFIELD ZOO - MEMBERS-ONLY OUTING Saturday July 20th Registration & Payment Form

Attendance is restricted to currently paid members of IPVI. All attendees must pre-register, purchase a 2013 Zoo T-Shirt and show current identification at the Zoo. Attendees may be required to sign Release of Liability & Use of Photographs Form.

Family Name: _____ Home # () _____ - _____
 address: _____ city: _____ zip code: _____
 e-mail: _____ Cell # () _____ - _____

- 1) Name: _____ Age: ___ T-Shirt: (infant), (small), (med), (large), (X-lg), (XX-lg), (XXX-lg)
 2) Name: _____ Age: ___ T-Shirt: (infant), (small), (med), (large), (X-lg), (XX-lg), (XXX-lg)
 3) Name: _____ Age: ___ T-Shirt: (infant), (small), (med), (large), (X-lg), (XX-lg), (XXX-lg)
 4) Name: _____ Age: ___ T-Shirt: (infant), (small), (med), (large), (X-lg), (XX-lg), (XXX-lg)
 5) Name: _____ Age: ___ T-Shirt: (infant), (small), (med), (large), (X-lg), (XX-lg), (XXX-lg)
 6) Name: _____ Age: ___ T-Shirt: (infant), (small), (med), (large), (X-lg), (XX-lg), (XXX-lg)
 7) Name: _____ Age: ___ T-Shirt: (infant), (small), (med), (large), (X-lg), (XX-lg), (XXX-lg)

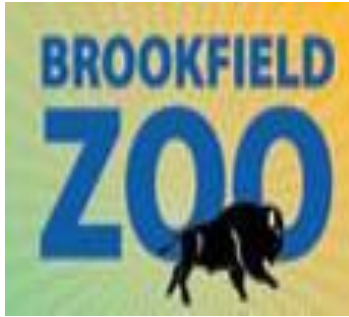
The T-Shirt is required & assists Zoo personnel in providing accommodations. Our theme is *“Literacy through Experience at Brookfield Zoo”*.....ask questions, touch the special exhibits, analyze and enjoy the unique sounds, and textures of the Zoo!

	Number of T-Shirts	Cost of T-Shirts
Total Number of Zoo Admission T-Shirts @ \$9/person		
Donation to IPVI for (IPVI scholarship) or (Zoo costs)		
TOTAL MONEY (included with this form) payable to IPVI		

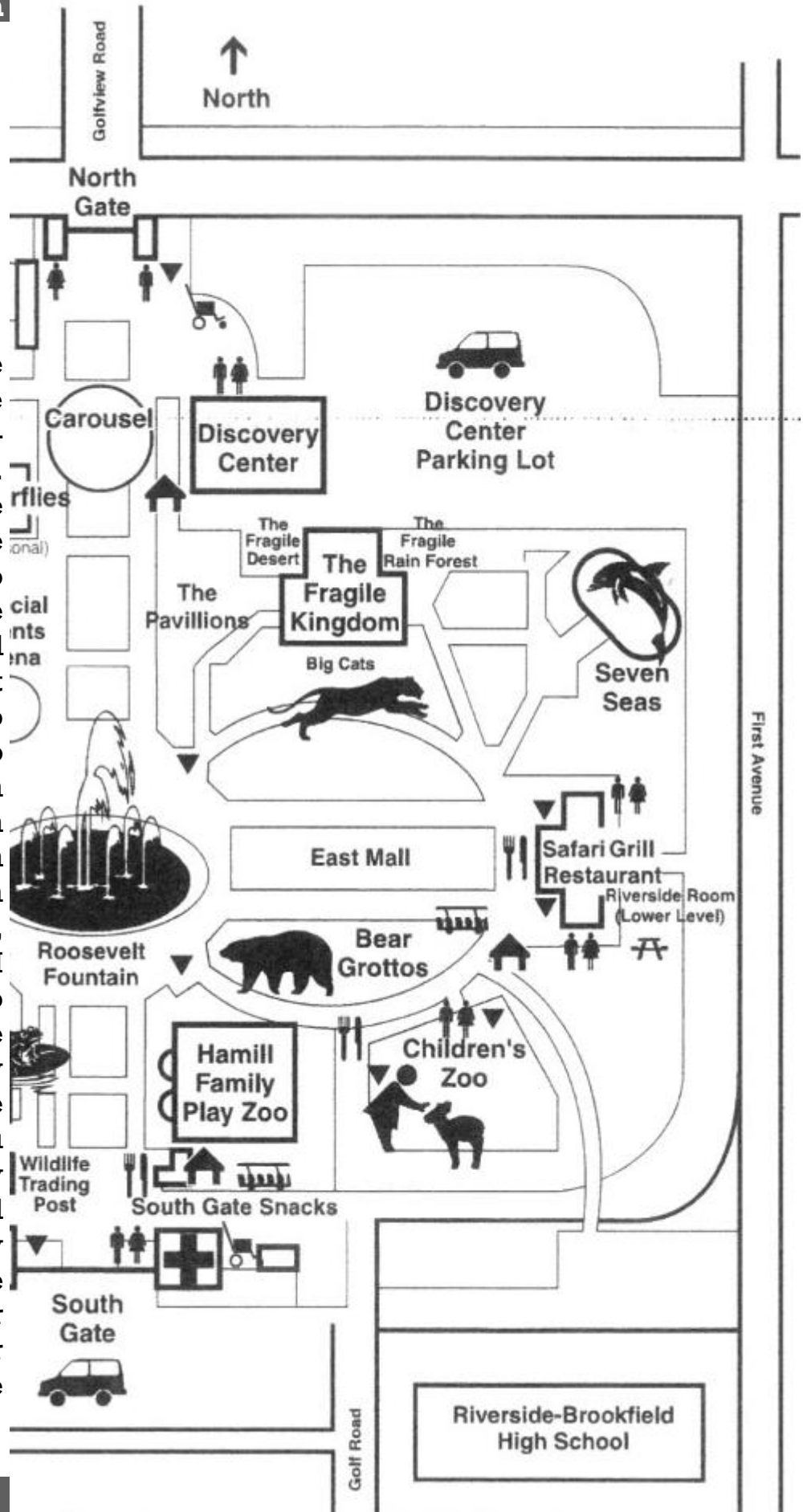
REGISTRATION CLOSSES ON JULY 7th, 2013

Mail this form and a check payable to IPVI for your T-Shirts and optional donation to:

Mary Zabelski
 The Chicago Lighthouse
 1850 West Roosevelt Road
 Chicago, IL 60608-1298



We are gathering in the Discovery Center. We are to park in the Discovery Center Parking Lot. We need to enter at the SOUTH Entrance, not the main entrance. To get to the South Entrance, take 1st Avenue to Ridgewood Road (the first traffic light south of 31st street). Go west on Ridgewood to Golf Road. Turn right on Golf Road to the South Entrance Parking Booth (See map). At the South Entrance Parking booth, say that you are with IPVI and you will not have to pay for parking. After the south parking booth, stay to the right and tell the next gate guard that you are with IPVI and they will let you on to the road leading to the Discovery Center parking lot. Come to the Discovery Center to check in and get your shirts and Zoo map. See you all there!



(Continued from page 3) - Ms. Vic's Volleys

whatever I'm doing for them, I'm trying to do it well.

So I have come up with a trick for combating some of this guilt even though my husband makes fun of me for it. You see I take lots of photographs. I develop the best and make each of the kids a chronological life book showing them the highlights of their daily lives. Pictures are taken not only of birthdays, holidays, or awards won, but also of them sleeping, laying next to the dogs, swimming in the pool with their friends, reading a book, or talking on the phone. It is my hope that when they're grown up they'll remember those good times that were provided and not that I was tired and crabby lots of the time. Besides, I know I'm doing something right because the other week when the youngest got grounded and couldn't go out or watch TV, the other two little ones played board games with him each night. I was so surprised at how they stuck together and didn't leave him all alone.

So my tip of the day is give yourself some credit. All you can do is plug along and try your best. Your kids will turn out okay, especially because you do care about them. Even though you're not perfect, you're perfect for them. Vision issues or not, there isn't a child around who doesn't want his/her own mom and dad over a substitute, warts and all. But if you are the alternate, do your best as well. Remember, as long as you're consistent in loving them, they'll remember just the good times. The other times will fade; and if you take a lot of pictures, you'll have lots of evidence of just how cool it was to be your kid.



FREE NATIONAL PARKS PASSES AVAILABLE FOR PEOPLE WITH DISABILITIES



National parks and recreation sites are popular summer destinations, and U.S. residents with disabilities can receive a free "Access Pass" that offers lifetime admission for the pass holder and three other adults. To receive the pass, individuals with disabilities are asked to present official documentation of disability status to the National Parks Service, either in person or by mail. A physician's statement or a document issued by a state or federal agency (e.g. Veteran's Administration, Social Security Disability Income, Supplemental Security Income) is acceptable. Learn more about the Access Pass program and locate recreation sites at nps.gov.

FAMILY CONNECT WEBSITE

Outdoor Play Tips for Toddlers Who Are Blind or Visually Impaired

By Kay Ferrell

From *Reach Out and Teach: Helping Your Child Who is Visually Impaired Learn and Grow*



There is no better time than summertime for toddlers who are blind or visually impaired to begin to learn about the outdoors and playing outside. In this excerpt from the book

ASK M@



ASK M@

Hey, everyone. I hope you're all doing well. I think I have a very good message for this month's issue. I want to talk to you all about the community service requirements in

high school.

Typically, in high school you will have to complete a certain number of community service hours in order to graduate. So what I want to stress is that, since you have to put in these hours to graduate, you might as well make them meaningful, right? So many students will leave fulfilling this requirement until their last year and then just do random community service that really is not meaningful to them, but just something they do to get it done.

My suggestion would be to think about something that inspires you, then set up your own events. You could possibly set up a fun run/walk like that Helen Keller one recently. Another great example was one that happened at my school. A student set up this charitable basketball tournament. Basically, for thirty dollars per team of three, you got to play basketball with all your friends while raising money for disadvantaged children.

You see there are so many great opportunities out there to really help with. So make your community service worth the time that you take out of your schedule to do it. **MAKE IT MEANINGFUL!** As I like to say, community service should be like working out. You don't do it for just a week or a month. It should be a life-long thing. It is good for you, too. It makes you feel better as well. So I hope this advice can help all the young adults and even their

parents out there. But until next month, I hope you have a great one!

M@



Reach Out and Teach: Helping Your Child Who is Visually Impaired Learn and Grow from AFB Press, author Kay Ferrell provides tips for families and professionals on making outdoor play safe, fun, and a learning experience.

Depending on where you live, your child might not go outside without you. If you are lucky enough to have a backyard, however, you will want to encourage your child to go outside by herself. But, you also want to make sure the environment is safe.

- Fence in the backyard, if you can, so your child does not unexpectedly wander away from you.
- Introduce your child to the backyard by walking with her around the perimeter of the yard first and then exploring the middle.
- Fix dangerous drop-offs or holes in the ground, if there are any, or mark them with a knee-high rope that prevents your child from going any further.
- Place a swing on a tree branch that's strong enough to support your child's weight. If other children might be playing in your yard, make sure your child knows how to listen for anyone else swinging before walking in that direction, to prevent her from being accidentally hit by the swing. Consider placing some sort of noisemaker, such as bells, on the swing as a warning for your child.
- Place a wind chime or other noisemaker near the door your child uses to go indoors and outside. This will act as a landmark for your child, a consistent noise that marks

where the door is. As your child becomes more independent, you might want to hang bells on the door, so you can hear if your child goes outdoors on her own.

Don't avoid the neighborhood playground. Playgrounds are great opportunities for making friends and trying out motor planning. It's also a good way for her to become familiar with playgrounds in general, so she'll be better prepared for recess and other activities at school.

Reach Out and Teach is available from AFB Press at www.afb.org/store.

To Include Or Not To Include

By Emily Coleman

The end of the school year is filled with many different opportunities to step outside of the educational box and simply have fun. Field trips are scheduled, performances are planned, and parties are enacted. For every opportunity in Eddie's life, we have to consider whether he should be included, or not included.

In May, Eddie's 1st grade classmates were going on a field trip to a farm. When we heard about it, we knew Eddie had to go. What could be better than touching farm animals and smelling the fresh (?) outdoors and discovering all that farms have to offer? Eddie walks to school, so even the prospect of riding a school bus sounded like something Eddie would like. We wanted him there, and his school made it happen.

The next function wasn't so easy. Eddie's general education class was performing a series of plays for the end of the year. There were

scripts to be memorized and songs to be sung. The kids had been practicing for weeks and Eddie had begun singing songs from their practice sessions. The problem was, we didn't recognize the songs, and didn't know any event was being planned.

To our disappointment, by the time we realized Eddie would not be involved, it was too late. The question was asked..."to include or not to include" but was never posed to us. For reasons outside of my understanding, the decision had been made to not include. I know that Eddie is not always a "picnic" and that he likely didn't care that he was not included...but, I cared.

Finally, as a teacher of the visually impaired, I heard about an event being planned in our adjacent city for students with visual impairments. Immediately, I thought, INCLUDE!!! I brought Eddie, another student, and their aides on an outing that included a carousel, a water fountain, and pizza for lunch (Eddie's favorite part I'm guessing).

Eddie wasn't sure about the carousel, but with encouragement and after a temporary meltdown while waiting in line, he had a blast. I loaded him onto the horse as he was saying, "no, no, no," and when the ride was done he said, "more, please...Go!" Success!

The point is, when asked to include or not to include, I don't even always know the best answer. However, I always want to try because by not including him we are simply leaving him out. We are saying that he "can't" without even giving him a chance.

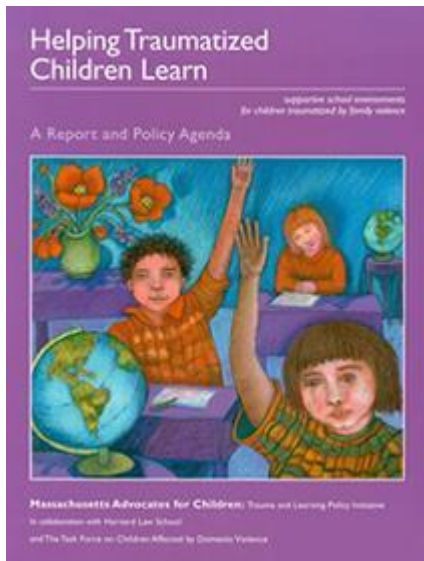
We're not only telling Eddie he "can't" but we are telling all his peers the same thing. The more Eddie is left out, the less they will consider him a classmate. Before we know it, he'll just be that blind kid down the hall that spends all

(Continued on page 22)



FEDERATION FOR CHILDREN
WITH SPECIAL NEEDS
Informing, Educating, Empowering Families

Helping Traumatized Children Learn



The above-titled book, written by the Massachusetts Advocates for Children in collaboration with Harvard Law School and the Task Force on Children Affected by Domestic Violence, is both critically acclaimed and nationally recognized as a much needed resource for educators, service providers, and parents (including Special Education Surrogate Parents). This is the first in a series of articles on the four opportunities to advocate for trauma-sensitive individual supports for a child: sharing information; trauma-sensitive evaluations; trauma-sensitive team meetings; and the IEP.

S H A R I N G I N F O R M A T I O N

It is important that professionals working with children and families get a thorough history of traumatic events that may have occurred to the child over the course of his or her life. A comprehensive history helps caregivers and others have an appreciation of the seriousness of the child's experience. It also provides clues

to gaps in a child's development of skills and can help caretakers and others be more supportive of the child's recovery. Schools are not likely to gather information on a child's trauma history as part of their standardized protocol. They generally obtain information on trauma events only when offered, yet children can spend 6-8 hours of their day with school providers. That is almost 50% of their waking day.

Schools often do not have sufficient information about a child's trauma history to assist appropriately with recovery efforts. Without a more thorough social history of the child, including information about a child's trauma triggers, cues, and anniversary dates, school staff may not recognize the reasons behind challenging behavior. They may spend time addressing the behavioral consequences of trauma rather than their root causes. As a result, building social coping skills, essential to the continued neurodevelopment of traumatized children, is not addressed. Teachers and others in schools need to gain a better understanding of child trauma and work collaboratively with other organizations in order to facilitate better academic and non-academic services.¹

Professionals working with students in the custody of the state need to tread carefully down this path: confidentiality is paramount, and social workers do not readily share this type of information. Sharing this type of information can make children feel vulnerable and stigmatized. Also, the "trauma story", if not recounted with skilled clinicians, can cause re-traumatization for some children. So what can be done? Department of Children and Families (DCF) social workers should share enough information with the IEP Team to indicate that trauma may be a contributing cause of learning or behavioral difficulties while avoiding unnecessary details, and always discuss the issue with the student, if it is age appropriate to do so.²

Balancing accountability with compassion is an underlying theme for teaching children with trauma histories. When disciplinary approaches that are adequate responses for typical transgressions don't work time after time for certain students, schools should look at a trauma-sensitive evaluation tool to determine whether trauma may be a factor. According to the National Child Traumatic Stress Network, one of the most common measures is the Child Behavior Checklist for Children. No advanced training is necessary to administer this measure, making it practical in most trauma-related service settings, including schools.

¹ *Helping Children in the Child Welfare System Heal from Trauma: A Systems Integration Approach From the National Child Traumatic Stress Network Systems Integration Working Group, p. 17. Rev. August 23, 2005.*

² *Helping Traumatized Children Learn: Supportive School Environments for Children Traumatized by Family Violence. Susan Cole, J.D., M.Ed., PowerPoint Notes for the Federation for Children with Special Needs, September 19, 2012.*

Reprinted with permission from NEWSLINE, Volume 33, Number 2, Fall 2012. *Federation for Children with Special Needs, The Scraft Center, 529 Main Street, Suite 1102, Boston, MA 02129. 617-236-7210, 800-331-0688, fcsninfo@fcsn.org, www.fcsn.org.*



Pat Quinn, Governor

Michelle R.B. Saddler, Secretary

100 South Grand Avenue, East
Springfield, Illinois 62762

401 South Clinton Street
Chicago, Illinois 60607

Biennially, the Illinois Department of Human Services along with several other state agencies and mandated councils sponsors a statewide event to commemorate the passage of the Americans with Disabilities Act of 1990 (ADA). This year's 23rd anniversary celebration entitled: "**ADA Breaking Down the Barriers**" highlights empowerment and opportunity, and celebrates accomplishments of people with disabilities. The celebration recognizes how state agencies, programs and other organizations have worked to implement the ADA and embrace the promise of the newly enacted ADA Amendments Act, to further improve access for people with disabilities.

This year "**ADA Breaking Down the Barriers**" includes four free workshops to be held in Chicago at the James R. Thompson Center, 100 West Randolph, Chicago, IL on July 16, 2013. Some workshops will be telecast to a Springfield site. The workshops include:

1. "**Employment Information Sessions**" (2 sessions) **Chicago only** - Learn how to find out about labor market trends and search for jobs on Illinois Job Link as well as jobs within state agencies. Learn about the state employment testing process, how to utilize resources in locating suitable employment and identify appropriate job titles. There will be information on an initiative to actively recruit and hire qualified applicants with disabilities through the "Successful Disability Opportunities" Program. Hosted by Illinois Department of Human Services in coordination with the Illinois Department of Employment Security and Central Management Services (CMS).
2. "**Americans with Disabilities Act (ADA)**"

Case Law Update” - Chicago and Springfield - Join this session to learn up-to-date information about how courts and federal agencies have been applying the ADA. Among other topics, this session will review how courts have used the ADA. Finally, this session will discuss recent case law and initiatives under the Illinois Human Rights Act and Environmental Barriers Act. This session is done in coordination with Equip for Equality, the Illinois ADA Project, and the Disability Rights Bureau of the Illinois Attorney General’s Office.

3. **“Affordable Care Act - Medicaid Expansion and Healthcare Marketplace” (2 sessions) -Chicago and Springfield** - This workshop will explain the new provisions of the Affordable Care Act that go into effect in 2014. There will be “new Medicaid” clients who qualify based on income. In Illinois, about 200,000 “new Medicaid” clients are expected to enroll in 2014, with another 143,000 by 2017. States must delineate a Benchmark Medicaid Plan for “new Medicaid” clients. The Benchmark Medicaid Plan may be the same as the full service package currently available. Health Insurance Marketplaces (formerly known as the Health Insurance Exchanges) will be established across the country. Illinois residents and small business owners will be able to compare quality and affordable health insurance options, apply tax credits directly, and receive enrollment support. Enrollment in health coverage on the Marketplace will open on October 1, 2013 with plans effective on January 1, 2014. This session will be coordinated with the Department of Healthcare and Family Services.

We ask that you register for workshops by completing the flyer and return it to the Bureau of Accessibility and Job Accommodations at 312-793-2406 (FAX) or email DHS.ADACelebration@illinois.gov no later

than Friday, June 28, 2013. Registration will be conducted on a first come, first served basis. There is limited space available, so it is important to register early. A letter of confirmation will be sent upon registration. We look forward to your participation.

Sincerely,

Martha Younger-White, Bureau Chief
Bureau of Accessibility and Job
Accommodation (BAJA)

*BAA, baa, black sheep,
have you any books?
YES, sir, yes sir, three bags full!*



**FREE Braille Book Bags for any family
with a blind child, birth to age 7**

Call: 800-548-7323 ext. 520
Go to
www.nbp.org and click on
Programs/ReadBooks!

**Brought to you by
National Braille
Press**



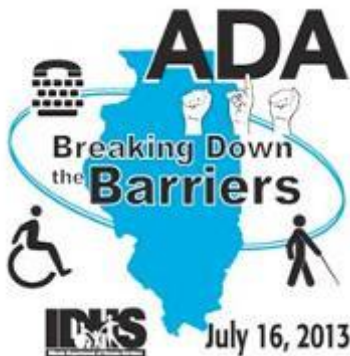


State of Illinois
Department of Human Services

ADA Breaking Down the Barriers

23rd Anniversary ADA Celebration | July 16, 2013 | Free Workshops on ADA Issues

Please check the workshops and locations preferred
(Chicago/Springfield) -(please indicate by preference order):



- “Employment Information Sessions” (Chicago only)
Check one: 9:00am to 11:00am 11:00am to 1:00pm
- “Americans with Disabilities Act (ADA) Case Law Update
(Chicago/Springfield) 10:00am to 12:00pm
Check one: Chicago Springfield
- “Affordable Care Act - Medicaid Expansion and Healthcare
Marketplace” (Chicago/Springfield)
Check one: Chicago Springfield
Check all that apply: 10:00am - Medicaid Expansion
 11:00am - Healthcare Marketplace

Name: _____

Address: _____

City: _____ State: _____ Zip Code: _____

Phone Number: _____ (V/TTY) FAX: _____

E-Mail Address: _____

Reasonable Accommodations Requested: YES _____ NO _____

If YES, What Accommodation is Requested? _____

Facilities are wheelchair accessible. Requests for interpreters or other reasonable accommodation needs should be submitted in advance of the workshop. Upon registration, a letter of confirmation will be mailed to indicate the location of the assigned workshop.

Upon arriving at the James R. Thompson Center, you will need to check in at the ADA Help Desk in the Lobby in order to receive a temporary badge so that you can enter the elevator to get to the meeting place without having to be through security. Make sure to have a photo ID.

Please complete this form and return **No Later Than June 28, 2013 to:** Bureau of Accessibility and Job Accommodation, 401 South Clinton, 3rd Floor, Chicago, IL 60607, DHS.ADA.Celebration@illinois.gov, 312/793-0034 (Voice), 888/614-2385 (TTY), 312/793-2406 (Fax)





JOIN OUR NATIONAL TELE-SUPPORT NETWORK FOR PARENTS OF CHILDREN WITH VISUAL IMPAIRMENTS

When your child is diagnosed with a serious eye condition that can cause blindness or vision impairment, you may feel lost and alone and unsure of what your child needs.

No matter where you are in the country, there's a community of caring parents who understand how you feel, because they're going through the same thing. The Guild's National Tele-Support Network can connect you with parents of children with the same eye condition as your child so you can share resources, experiences, strength, and hope.

These free Tele-Support groups meet by phone every week. They are facilitated by a psychologist or social worker with frequent live input from experts in the fields of medicine, vision, education, and rehabilitation.

TO REGISTER:

Call **Dan Callahan** at **800-915-0306**
or email **CallahanD@guildhealth.org**

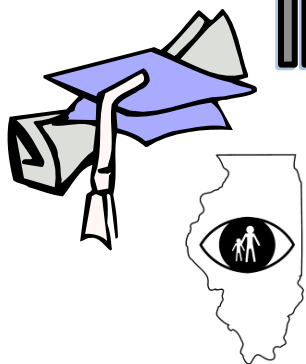
JEWISH GUILD
HEALTHCARE

Vision + Health

CHILDREN'S VISION HEALTH

Formerly The Jewish Guild for the Blind.

Beginning our 2nd century of care.



IPVI's Matthew Benedict Juskie Scholarship Fund

For students who are blind or visually impaired

Any individual intending to continue his/her education at a college, university or trade school and is interested in being considered for the MBSJF, must meet the following criteria: Illinois resident, blind or visually impaired, undergraduate or graduate student, and an IPVI member.

The candidate's application is processed free of charge. The student must mail or fax a written request to receive a copy of the application from IPVI. Then the student must complete the MBSJF Application Form, provide 3 completed Reference Forms, submit medical records or a letter from the vision specialist confirming the condition, and mail them to IPVI. The applicant may attach a 1-page resume of clubs, offices held, or any other pertinent information concerning his/her activity record.

The IPVI Board of Directors will review all scholarship applications and select the winners. IPVI reserves the right to announce such awards in its newsletters and marketing materials.

The MBSJF is funded completely from tax-deductible donations from individuals, companies and corporations who support IPVI's goals. Any individuals or groups wishing to donate to this fund, please forward your tax-deductible donations to IPVI. Thank you for your continued support of IPVI.



To request a scholarship application, please contact the Scholarship Program Coordinator, Vicki Juskie at: 1-815-355-2098 or vajuskie@aol.com



Calling all campers!

Join The Chicago Lighthouse Vision Rehabilitation Center for our 2nd year of Camp Lighthouse for ages 6 to 22 years old.

A different theme will be featured from 9am-4pm on the following Fridays:

June 28, July 12 & 19, August 2, 9 & 16, 2013

Program Highlights:

Campers will participate in a variety of multisensory activities ranging from kayaking, tandem cycling, Goalball, cooking (& of course, eating), Beep Baseball, talent shows, field trips & more.



To register, please contact:

Pam Stern, Manager of Youth/Adult Enrichment Programs

T: 847-510-2054 or 847-510-6200

pam.stern@chicagolighthouse.org

222 Waukegan Road Glenview, IL 60025

DEVELOP FRIENDSHIPS, LEARN NEW SKILLS & HAVE FUN!





2013 CAMP LIGHTHOUSE REGISTRATION FORM

Camper Name: _____

Address: _____

City: _____ State: _____ Zip Code: _____

Date of Birth: _____ Daytime Phone: _____

9am-4pm on June 28, July 12 & 19, August 2, 9 & 16 for \$360

\$60/single session circle dates attending total fee \$ _____

Camp fee payable by check or credit card:

Check Visa Mastercard Discover

Card Number: _____

Expiration Date: _____ Security Code: _____

Name on Credit Card: _____

Billing address if different from above:

Address: _____

City: _____ State: _____

Zip Code: _____ Phone: _____

Please return this registration form/submit payment to:

The Chicago Lighthouse Vision Rehabilitation Center
Attn: Pam Stern, Manager of Youth/Adult Enrichment Programs
222 Waukegan Road, Glenview, IL 60025
pam.stern@chicagolighthouse.org ~ T: 847-510-2054 ~ F: 847-729-2207



SUMMER AUDIO-DESCRIPTION MOVIES AT THEATER NEAR YOU!

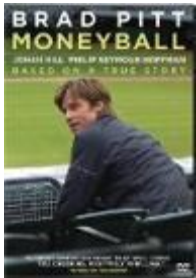
Narration is provided during non-dialogue moments, specifically for people who are blind or have low vision

The Chicago Lighthouse Vision Rehabilitation Center
222 Waukegan Road
Glenview, IL 60025



Wednesday, July 10, 10:00am – 12:00pm

Guilt Trip starring Barbra Streisand and Seth Rogen, is a comedy-drama based on a real-life trip where invites his widowed on a cross-country road-trip as he tries to sell his new product.



Wednesday, July 24, 10:00am – 12:00pm

Moneyball starring Brad Pitt, Robin Wright, Philip Seymour Hoffman is based on true life story which changes the way baseball is played. Oakland A's general manager challenges the system and defies conventional wisdom when his is forced to rebuild his small-market baseball team on a limited budget.



Wednesday, August 7, 12:30pm – 2:30 pm

Soul Surfer is the true story of competitive teen surfer Bethany Hamilton, who lost her arm in a shark attack and courageously overcame all odds to become a champion again, inspiring millions worldwide through her sheer determination and unwavering faith. With Dennis Quaid.



Wednesday, August 21, 12:30-2:30

We Bought a Zoo, starring Matt Damon and Scarlett Johansson is about a father moves his young family to the countryside to renovate and re-open a struggling zoo following the death of his wife in this comedy/drama

Of course we will be serving popcorn and beverages!

RSVP: Pam Stern, Manager of Youth/Adult Enrichment Programs
pam.stern@chicagolighthouse.org
847.510.2054



SUMMER PLAYS WITH AUDIO-DESCRIPTION

(Narration when there isn't dialogue between characters)

170 N. Dearborn Street, Chicago, IL 60601, 312-443-3800

Jungle Book - Wednesday, July 10 at 7:30pm

THEATRE
GOODMAN

This world premiere is a music-filled spectacle about young Mowgli's adventures growing up in the animal kingdom. It is based both on Rudyard Kipling's children's tales and the classic Disney film. For adults and families with children ages 6+.

Steppenwolf Theatre Company



1650 N Halsted Street in Chicago, IL, 312-335-1650

Slowgirl - Sunday, August 4, Touch Tour: 1:30pm Curtain: 3pm

In the wake of a harrowing accident at a house party in Massachusetts, a teenager flees to her uncle's isolated retreat in the Costa Rican jungle to await, or avoid, the repercussions. As the reclusive uncle and his impulsive niece get reacquainted over the course of a week, startling details about their pasts slowly unfold. *Slowgirl* is a compelling story about owning your past—and getting on with your life. “Audiences will find themselves on the edge of their seats, drawn into an ever-deepening relationship that’s pulsing with intensity, confusion and love.” *Theatre-Mania*

Belleville - Sunday, August 18, 1:30 Touch Tour, 3:00 Curtain

Newly married American expats Zack and Abby live an enviably hip, do-gooder existence in the up-and-coming neighborhood of Belleville, Paris. But a single encounter in the apartment they rent...

A “thrillingly good” drama with elements of a “nail-biting psychological thriller”
by *The New York Times*



Victory Gardens Theater

2433 N Lincoln Avenue, Chicago, IL 60614, 773-871-3000

Mojada - Sunday, August 11 - 3:00pm (touch tour at 1:30pm)

A breathtaking reimagining of Euripides' *Medea* transported to Chicago's Pilsen neighborhood. Medea, a young, gifted healer in exile, enters the United States illegally to escape a past filled with betrayals. With husband and her son in tow, she is caught in a struggle to adapt to the modern world. A modern take on the Greek myth tackles American immigration, family, tradition, culture and the explosive moment when they all collide.

If interested in any performance and lower group rates contact:

Pam Stern, Manager of Youth and Adult Appreciation



pam.stern@chicagolighthouse.org 847-510-2054



**The Chicago Lighthouse Vision Rehabilitation Center
proudly offers
Young Professionals**



**at
222 Waukegan Road
Glenview, Illinois 60025
monthly, day and time to be determined;
please let me know your availability**

For more information contact:

**Pam Stern, Manager of Youth/Adult Enrichment Programs
847.510.2054
pam.stern@chicagolighthouse.org**

The Chicago Lighthouse

Lighthouse Away Southwest Expedition July 22nd - 30th, 2013

The expedition is intended for both sighted and blind/low vision students between the ages of 15 and 19 years old

Program Highlights



Warm yourself by a campfire as you visualize ancient tales recounted by a Navajo storyteller and flute player under the endless stars of Canyon de Chelly.



Enjoy a true escape as you raft the San Juan River, embrace the mystical powers of the desert and conduct important research on the impact of sound on the environment.



Explore hidden and mysterious cliff dwellings and learn how their original inhabitants faced conservation issues similar to those we face today.



Take your new leadership skills to the next level at the No Barriers Summit, and meet with other youth to truly explore what it means to have a No Barriers mindset.



Program Description

The stunning scenery of the Southwestern U.S. never fails to awe and inspire those who take the time to discover its riches. This region, known as the Four Corners, showcases dramatic geologic formations and sits at a crossroads of American Indian, Spanish and American cultures. As a testament to the unique combination of natural and cultural history in the region, the Colorado Plateau boasts the country's highest concentration of National Parks and Monuments. Raft the San Juan River, explore spectacular National Monuments, and visit the Navajo Nation, the largest American Indian reservation in the country. There's no better place to contemplate your place in the universe than under the desert sky's magnificent canvas of stars.

Pre-Travel Curriculum



Desert ecology, soundscape research and Southwest conservation issues



Navajo culture and Spanish, American Indian and U.S. history



Leadership skills, service learning and responsible travel knowledge

For more information on camp,
Contact Pam Stern, Manager of Youth and Adult Enrichment Programs,
At 847-510-2054 or pam.stern@chicagolighthouse.org

Program Itinerary

This is a sample standard 9-day program. This program provides an intense wilderness experience - travelers should be in good physical health and comfortable “living” in the outdoors.

Day 1:

Travel Day

Today we drive from Telluride to Durango, Colorado. Here, we spend the night at a modest motel.

Day 2:

Canyon de Chelly & Navajo Culture

Today we travel to the Navajo Nation, specifically Chinle, Arizona – the gateway city to Canyon de Chelly National Monument. We get our first taste of Navajo culture and watch the sun set from an overlook on the rim of spectacular Canyon de Chelly. Tonight we camp at a campground on the rim.

Day 3:

Hiking & Storytelling

Before we hike down into the dramatic red rock walls of Canyon de Chelly, a Navajo Park Ranger introduces us to the challenges of protecting an area that’s been inhabited by humans for over 5,000 years. Once in the canyon, our resting spot is Antelope House Ruin, where we camp under a massive alcove on a Navajo family’s property. Tonight we are captivated by fireside Navajo storytelling and music as we gaze at the stars above.

Day 4:

Hiking & Service

Today we engage in a service project that will help the family whose property we’re staying on. We may help clear the area of invasive species or assist Canyon elders with a special project such as building fences or benches. We hike out of the canyon in the late afternoon and then drive a few hours to the San Juan River. Tonight we meet up with our river guides from Grand Canyon Youth and camp near the river at a campground called Sand Island.

Days 5-7:

Raft the San Juan River

We begin our voyage down one of the most spectacular rivers in America, the San Juan. We spend the next four days floating 27 miles from Sand Island, Utah to Mexican Hat, Utah.

Although we use rafts to make our way down the river, we actually spend quite a bit of time on land hiking to ancient ruins, playing games around camp and exploring the amazing geological features of the region. This is a calm section of the river and the largest rapids we encounter are Class II. During our time on the river, we camp on sandy beaches every night and help with each meal preparation.

Day 8:

Transition Day

Today we spend our last morning on the river and then help our guides unload all the boats and pack up gear. From the “take-out” in Mexican Hat we either drive to Gallup, New Mexico or Moab, Utah. Here, we enjoy a much-deserved shower at our motel and reflect on our awesome adventure.

Day 9:

Travel Day

Depending on whether we’re driving or flying, we may have time to visit another National Park nearby before heading home.



To learn more, visit http://globalexplorers.org/news/chicago_lighthouse_canyon_skies_program_2013

FRCD



Family Resource Center on Disabilities
Providing parents of children with disabilities with information, training, assistance, and support.

REGISTER FOR YOUR FREE PARENT WORKSHOP TODAY!

Space is limited; registration is mandatory. Please visit www.frcd.org or call 312-939-3513 for registration and workshop location.

**10th Annual Disability Pride /
10no Orgulloso Desfile Annual sobre
Discapacidades!**

Sunday, July 14, 10am

**FRCD on Blogtalkradio: Talking Employment
with MOPD**

Tuesday, July 16, 1pm

**(A.Y.L.P.) Advance Youth Leadership Power
Meeting**

Tuesday, July 16, 4pm

The Empowered FE-FE's

Thursday, July 18, 4pm

**(A.Y.L.P.) Advance Youth Leadership Power
Meeting**

Tuesday, July 23, 4pm

Reaching Our Dreams

Friday, July 26, 4:30pm

Autism Awareness Day

Saturday, July 27

6 Flags Great America

**(A.Y.L.P.) Advance Youth Leadership Power
Meeting**

Tuesday, July 30, 4pm

The Family Resource Center on Disabilities (FRCD) offers parents of children with disabilities birth to 21 years old, their helpers, relatives,

professionals, and interested community members no-cost training and workshops, telephone and e-mail assistance, and resources to help claim their role as the child's most effective and significant advocate.

You are invited to contact FRCD for information, resources, support and training.

1-312-939-3513 | info@frcd.org |

www.frcd.org

20 East Jackson Blvd., Room 300

Chicago, IL 60604

(Continued from page 8) - To Include or Not to Include

day working alone. He'll be considered a fixture, but nobody will "own" him.

Imagine living without anyone wanting to take ownership of you. To be nobody's parent, sibling, spouse, or friend? To have nobody say, "She's my ____." How sad. I won't let that happen to Eddie. He is my son. He is my daughters' brother. He is my mother's grandson. He is YOUR student. He is YOUR classmate. He could be YOUR friend.

MAKING SENSE

For Parents, Students, and Teachers of the Visually Impaired: Save the Date - Saturday, September 28 from 9:30am to 3:30pm for "An Apple for Your Student" class designed especially for parents, students, and TVIs. This comprehensive workshop walks you through many of the features of using an iPad including using VoiceOver, learning gestures, researching and managing apps, connecting Bluetooth devices, and working with documents. This is a free workshop for parents and for students who are accompanied by a

(Continued on page 24)



Hello all,

Due to clients' interest, new Adult Enrichment Programs are being developed at

The Chicago Lighthouse Vision Rehabilitation Center
222 Waukegan Road
Glenview, Illinois

Please let us know what appeals to you, and circle your preferred day(s) and time(s).

Book Club



Karen Odean, Director of Talking Books, will provide free audiobooks for those registered.

Please circle the day(s) and time(s) preferred

M T W Th F Morning Afternoon

Writing Club



Do you have professional background, or simply enjoy as a hobby, i.e., memoirs, travel journals, poetry, creative writing, etc., come share your writing, and get feedback from club members.

M T W Th F Morning Afternoon

Please list other clubs you may be interested in:

Contact:

Pam Stern, Manager of Youth/Adult Enrichment Programs
pam.stern@chicagolighthouse.org 847.510.2054

The GuildScholar Program

A Scholarship for Visually Impaired High School Students

Open to all legally blind high school students entering college in September 2014. Application to be made at the beginning of the senior year of high school.

Must be a US Citizen or legal resident, have an excellent academic record and have demonstrated school and community leadership.

Scholarships of up to \$15,000 will be competitively awarded to qualified students. The deadline for the 2014 scholarships is September 15th, 2013. The GuildScholar application is online.

Please log on to www.jgb.org/guildscholar.asp
For more information, contact Gordon Rovins at
rovinsg@guildhealth.org

**JEWISH
GUILD
HEALTHCARE**
Vision + Health

(Continued from page 22) - Making Sense

parent or TVI. Fee for TVI is \$25 with accompanying CPDUs available. Don't miss an iPad in the classroom environment! To register, call David Flament or email david.flament@second-sense.org.

Calling All Braille Readers, Teachers, and Parents!: Donate gently used but no longer needed braille books to the 2013 Braille Book Fair sponsored by the National Organization of Parents of Blind Children. The primary goal of the program is to get more braille books into the hands of children and beginning adult readers. Most needed books include print-braille picture storybooks, fiction, non-fiction, sports, and cookbooks. Begin your search through the boxes in your basement and spare room and get those books shipped via

UPS to Braille Book Fair, Attention: Milton Bennett, 8901 Atlantic Ave, Orlando, FL 32824. Direct questions to Krystal Buillory at 318-245-8955 or kquillory@lcb-ruston.com.

New Graphing Calculator: Orbit Research and the American Printing House for the Blind (APH) are developing the world's first graphing calculator that's fully accessible to students with vision loss. The Orion TI-84 Plus is a compact accessory that attaches to the top of the popular Texas Instruments TI-84 Plus calculator, enabling a student to interact with the calculator using speech, audio, and haptic (vibration) feedback. The Orion will also have a USB port for expanded use with other hardware accessories, especially printers and braille embossers, which will enable students to produce hard copies of their work. The

Orion TI-84 Plus will be available through APH's Federal Quota Program and units will ship in time for the 2013-2014 school year.

New Affordable Smart Phone: Sprint is offering the new LG Optimus F3 that is packed with features for people with vision loss. The phone costs \$29.99 after rebate on a two-year contract. This Android smart phone has Talks Back, a text-to-speech app to help users to interact with the phone. You can also take voice-activated photos by saying "cheese." This new phone can be purchased by contacting a Sprint store or calling 866-866-7509.

Reprinted from MAKING SENSE, July 2013, Second Sense, Beyond vision loss, 65 East Wacker Place, Suite 1010, Chicago, IL 60601, 312-236-8569, www.second-sense.org.



APH NEWS

REVISED! *Reach for the Stars, Planning for the Future*

Large Print with CD-ROM: [7-08412-00](http://www.aph.org/Products/7-08412-00) -- \$20.00

Braille: [5-08412-00](http://www.aph.org/Products/5-08412-00) -- \$25.00

This guidebook helps families with planning positive transitions for young children with disabilities.

Reach for the Stars aids families in working with school personnel to create educational plans that will lead to inclusive educational programs.



- Family members can work with teachers, community members, and their child's peers to complete the maps and supporting materials prior to attending a transition meeting for their child
- Service providers can use the material to understand a family's desires and expectations regarding their child's future.
- Information from the Reach for the Stars process can be utilized as part of the child's functional assessment to facilitate the development of an Individualized Family Service Plan (IFSP) or an Individualized Education Plan (IEP).

Curriculum Framework

- **Assessment:** the process of gathering comprehensive information about children to guide educational programming decisions.
- **Scope and Sequence:** refers to the skills children should learn and the order in which they should learn them.
- **Activities and Instruction:** includes the contexts in which instruction occurs, as well as the strategies for providing instruction.
- **Performance Monitoring:** (progress monitoring) data on children's performance should be collected on a regular (ongoing) basis.

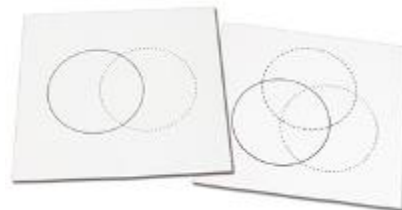
Person-Centered Planning (PCP)

Person-centered planning emphasizes positive attributes of children with disabilities rather than their weaknesses. When using PCP, programs are planned around what works for a child, rather than a child's conventional test scores. Similarly, when PCP is employed, decisions are made based on informed choice rather than what is available for a child. Finally, families are actively involved in the PCP process, particularly when used with young children.

NEW! *Venn Diagram Template Kit*

1-04095-00 -- \$15.00

A Venn diagram or set diagram shows all possible logical relations between a finite collection of sets.



The Venn Diagram Template Kit includes 15 sheets with two-circle diagrams and 15 sheets with three-circle diagrams, sized to allow for Braille labeling in all sections and in the outer margins. The outlines of the circles are made in contrasting line styles so they are easily distinguishable, both visually and tactually. These heavy, consumable sheets may be tooled directly or used in a Braillewriter. Includes a total of 30 sheets, measuring 11.5 x 11 inches.

NEW! *Large Print Textbooks for Your eReader!*

The Accessible Textbooks Department of APH now offers hundreds of [large print textbooks for digital download!](#) Hundreds of textbooks created using APH's exclusive accessibility process are available for purchase through the [File Repository of the Louis Database](#). Books are in PDF format and may be read on your Kindle®, iPad®, laptop, or many other digital readers. These accessible PDF files may also be read using synthetic speech on devices that do not have a screen, such as APH's Book Port Plus™.



High Quality Large Print at a Substantial Savings

APH electronic large print textbooks feature the complete content of the original print edition, formatted for improved accessibility using APH's proprietary in-house process. All textbooks use a minimum 18-pt. font, enlarged images, and a color palette designed for accessibility and clarity. The digital format provides greater portability and convenience for the user. Also, many of these digital editions now feature image descriptions.



Several subjects are available, including language arts, science, and social studies, from the nation's best-known publishers. Search Louis for titles you need and download your textbooks today!

Notes

- While APH is not taking orders specifically for the digital format, current large print textbook orders are being offered in print and digital file form.
- One copy of each desired large print file must be purchased for each student user.
- APH electronic large print textbooks are intended for use on an eReader only; they cannot be printed.

The electronic large print books are available using quota funds, and are available only to students served by the quota system. The billing process is the same as for all other repository downloads; a monthly bill/statement is sent out from the Finance Department.

To transfer files to the student's device, consider looking into the free program/app Dropbox. You can load the program onto your PC or Mac, and then put the Dropbox app on the student's device. You can then quickly transfer files from your computer to the student's. Or there is the option to send a link to the student, and he/she can download the file by clicking on the link and accessing the Dropbox website. Here is the link to their website, so you can investigate it further: <https://www.dropbox.com/>.



PICO



Take a closer peek at the new Pico upgrade! You'll like what you see. Pico fits easily in your purse or pocket, and the integrated battery makes it easy to carry wherever you go. With Pico, you can read even in dimly lit areas. Pico is so small you will always want it with you—shopping for greeting cards, looking at price tags and reading on the go.

Convenience is at your fingertips! Read bills, schedules, grocery lists, receipts, menus and more in bright color, positive text (black on white), negative text (white on black) or yellow on blue modes.

Recommended by eye care professionals for people with low vision, Pico comes with a risk-free, 30-day money back guarantee.

Living with low vision just got easier. Wherever life takes you, equip yourself with a video magnifier that goes the distance.

Brookfield Zoo



It is not exactly a stampede, but the sound of little hooves can be heard at Brookfield Zoo with the birth of an addax antelope on June 7 and several more are expected in the coming weeks.



The Chicago Zoological Society (CZS) is delighted to announce that three of its bottlenose dolphins are pregnant. The mothers-to-be—Allie, 26; Tapeko, 31; and Spree, 10—are due to give birth during the summer and fall.



Two sloth bear cubs that were born on January 20 made their public debut recently, just in time for Mother's Day. The cubs have been in a maternity den for a few months with their mom, Hani, 10, growing by leaps and bounds.

IPVI

P.O. Box 2947, Naperville, IL 60567-2947

1-815-355-2098 • Email: ipvi@ipvi.org • www.ipvi.org



Jonathan Buka, MD
Alexander J. Khammar, MD
Benjamin H. Ticho, MD
Karl E. Ticho, MD

10436 Southwest Highway
Chicago Ridge, IL 60415
708.423.4070

600 Ravinia Place
Orland Park, IL 60462
708.873.0088

40 S. Clay - 118E
Hinsdale, IL 60521
630.323.4202

PRESIDENT

Bill Bielawski
421 Applegate Court
Naperville, IL 60565
(630) 357-8576
wjbielawski@ipvi.org

OPERATIONS VP

Rich Zabelski
6153 N. Nettleton Avenue
Chicago, IL 60631
(773) 774-4742
richzabelski@ameritech.net

SERVICES VP

Judy Metoyer
221 S. Princeton
Itasca, IL 60143
(630) 414-0825
metoyer.j@sbcglobal.net

TREASURER

Vicki Juskie
21170 Deerpath Road
Frankfort, IL 60423
(815) 464-6162
vajuskie@aol.com

SECRETARY

Dawn Wojtowicz
9188 161st Place
Orland Hills, IL 60487
708-590-6447
deeder0477@aol.com

NAPVI REGION 3 REPRESENTATIVE

Pam Stern
1912 Mission Hills Lane
Northbrook, IL 60062
847-217-7590
pamstern3@gmail.com

**THIS PUBLICATION IS SUPPORTED
(IN PART) BY THE NATIONAL
ASSOCIATION FOR
PARENTS OF CHILDREN WITH
VISUAL IMPAIRMENTS (NAPVI)
HILTON/PERKINS
PROGRAM AND (IN PART) FROM A
GRANT FROM THE FAMILY RE-
SOURCE CENTER ON DISABILITIES**



Join **IPVI** or renew your membership today!

The *Illinois Association for Parents of Children with Visual Impairments* is a state-wide, non-profit organization that enables parents to find information and resources for their children who are blind or visually impaired, including those with additional disabilities.

Your IPVI membership dues or generous contributions help to support all of our ongoing efforts:

- Regular communications which include: workshops, conferences, training seminars, legislative issues, organizational announcements, products, and advice about raising a child who is visually impaired.
- Offers several \$500 college scholarships each year.
- Publishes a resource catalog which includes anything and everything to do with visual impairment.
- Conducts training and support sessions where parents share experiences and ideas.
- Holds fun outings adapted for children with visual impairments at athletic, cultural, educational, and entertainment settings.
- Represents parents of children with visual impairments at conferences, public hearings, and on committees.

What does IPVI do?

- Promotes and provides information through meetings, correspondence, publications, etc., which will help parents meet the special needs of their children with visual impairments.
- Facilitates the sharing of experiences and concerns in order to provide emotional support and relief from feelings of isolation for parents and their families.
- Creates a climate of opportunity for children who are blind in the home, school, and society.
- Fosters communication and coordination of services among federal, state, and local agencies and organizations involved with providing services to people who are visually impaired.
- Advocates on a statewide level for services to children who are visually impaired and their families.
- Keeps members informed about current proposals and actions which impact on children with visual impairments and their families.

Check one:

Parent/Guardian Membership: \$15 per year.

Child(ren)'s Names: _____

Birthdate(s) of my visually impaired child(ren): _____

My child(ren)'s eye condition: _____

I give my permission to release my name to other parents.

Group/Agency Membership \$50 per year.

Extended Family/Friend Assoc. Membership \$15/year.

Medical Specialist \$50 per year.

Scholarship Fund \$10.00

Donation: \$ _____ (tax deductible)

New Membership

Renewal

Name: _____

Address: _____

City: _____ State: _____ Zip: _____

Phone: (_____) - _____

Email: _____

Please enclose this form along with your payment by check to:

IPVI • P.O.Box 2947 • Naperville, IL 60567-2947

Have questions or need more information?

**Call us at
1-815-355-2098**

Illinois Association for Parents of
Children with Visual Impairments
P. O. Box 2947
Naperville, IL 60567-2947

Please contact IPVI to see if you are
up-to-date on your dues at the ad-
dress on the left or
1-815-355-2098
Email: ipvi@ipvi.org
www.ipvi.org

IPVI CALENDAR

- | | | |
|--------------|---|------------------------|
| ▶ July 12-14 | ican's 8 th International Conference | Chicago |
| ▶ July 20 | IPVI Annual Zoo Outing | Brookfield |
| ▶ July 16 | ADA "Breaking Down the Barriers" | Chicago or Springfield |
| ▶ July 19-21 | NAPVI 2013 International Family Conference | Massachusetts |
| ▶ 7/12-8/4 | Blind, Inc. Buddy Program | Minneapolis |
| ▶ July 22-30 | Lighthouse Away Southwest Expedition | Southwestern USA |
| ▶ 7/29-8/9 | NFB Bell Program | Chicago |
| ▶ 7/29-8/3 | NFB STEM-X Program | Baltimore |

Please call
1-815-355-2098
for any questions, concerns,
or comments that IPVI can
help you with.

**Newsletter Deadline for
AUGUST is JULY 10th**



**Check Out
www.ipvi.org**

Calendar of Events!
News and Updates!
Useful Links to Web Sites!
And more...